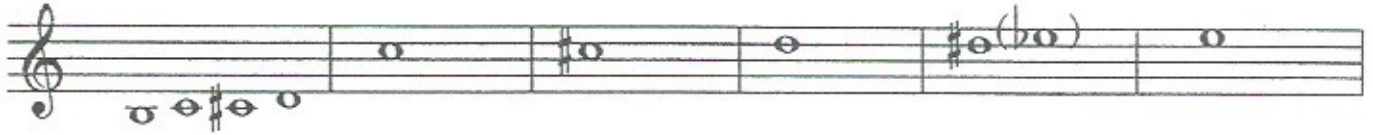


# Pitch Tendencies & Adjustments

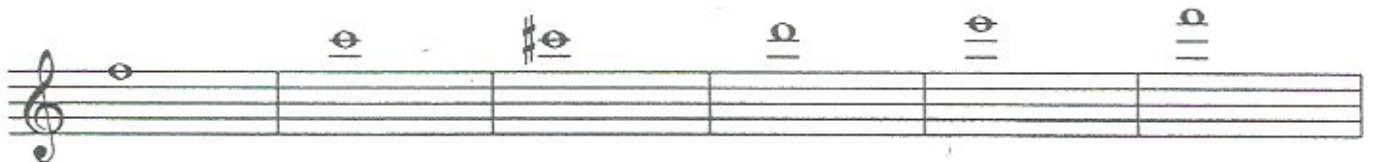
## Flute

(Notes not addressed are generally acceptable)

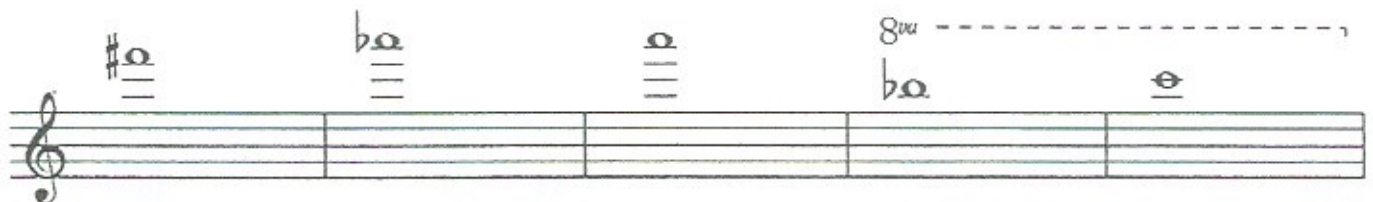
S = sharp  
 F = flat  
 V = very  
 1/2H = half-hole



Pitch Tendency	F	S	VS	F	F	F
Adjustment	Direct air flow upwards	Add 3rd finger of left hand and direct air down	Add all 3 fingers of right hand or use low C# fingering, Direct air down	Add top right hand/trill key 1/2 open RT1	1/2H 3rd finger of right hand	Add lower right hand trill key RT2



Pitch Tendency	F	S	VS	F	S	F
Adjustment	1/2H right hand 1st finger	Add 3rd finger of left hand Direct air down	Add all 3 fingers of right hand, Direct air down	1/2H left hand 3rd finger	Do not use Eb key RP1	Use low C# (RP2) in place of Eb (RP1)



Note: Could be high or low depending on instrument

Note: Could be high or low depending on instrument.

Pitch Tendency	S	F	S	F	S	S	F
Adjustment	Use right hand 2nd finger to replace right hand 3rd	Use low C# (RP2) in place of Eb (RP1)	Add 2nd & 3rd finger of right hand	Add right hand 3rd finger and use low C# (RP2) to replace Eb (RP1)	Use thumb, L1 and L3 of left hand, RT1, RT2 and RP1 of right hand. Many alternates exist. Experiment on your instrument.	Use all 4 fingers of left hand, 1st & half hole 2nd of right hand	Use all 4 of left, 1 3 and C key of right.

(No thumb for either)